

**SHAREATE**

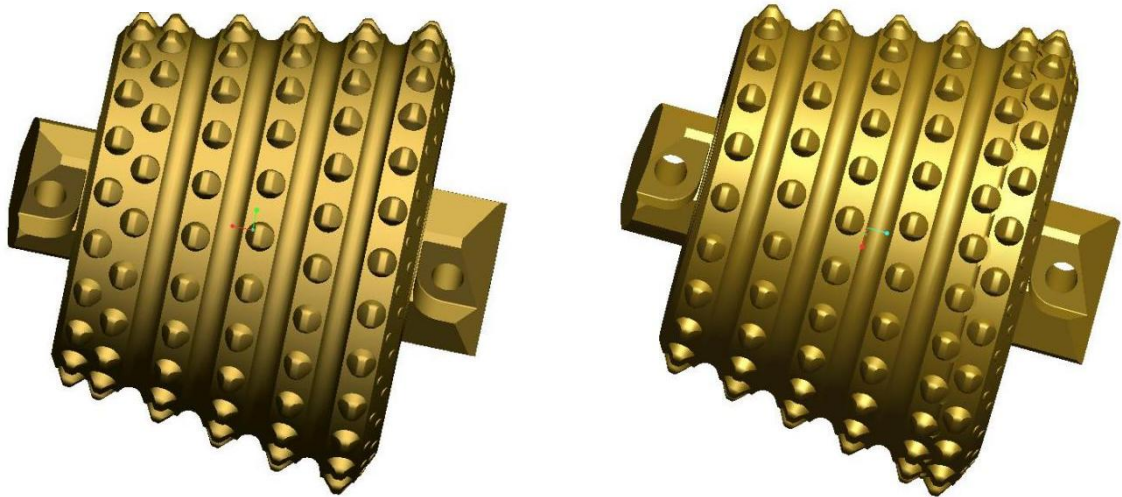
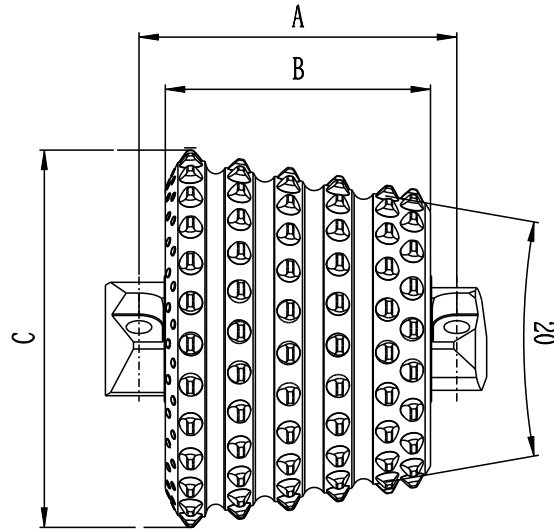
# Roller Cutter



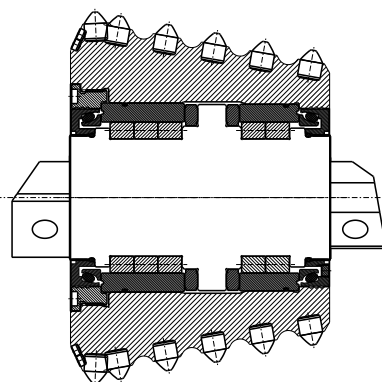
**SHAREATE TOOLS LTD.**

## Model of TCI Roller Cutter

12-1/4 series: applicable for medium hard to hard formations.



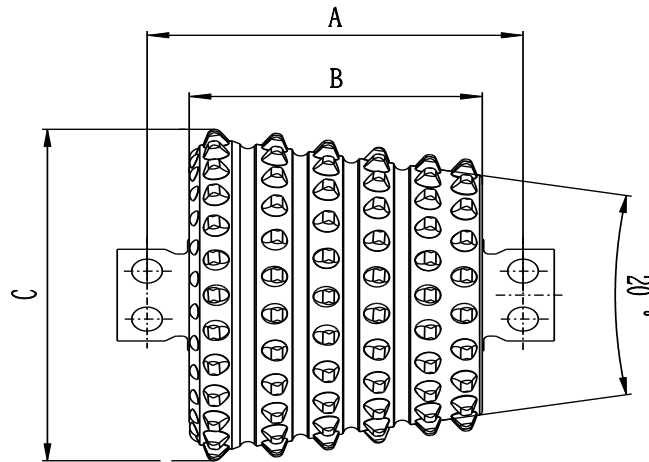
NO	Model	A	B	C	Insert Rows	Cone Angle
1	SXG310 6A4 V01	260	217	310	6	20°
2	SXG310 6B4 V01	260	217	310	6	20°

Model Description	Product Feature	
<p><b><u>SXG 310 6 A 4V01</u></b></p> <ul style="list-style-type: none"> <li>●SXG SHAREATE</li> <li>●310 Max.Diameter</li> <li>●6 Rows of inserts</li> <li>●A Cutter type (A-Double rows inserts on bottom end, B-Single row inserts on top end.</li> <li>●4 Hardness class of rock formation</li> <li>●V01 Connection type ( Single hole of V face)</li> </ul>	<ul style="list-style-type: none"> <li>●Double rows inserts protection to strengthen the gage row.</li> <li>●Adopting the bigger diameter wedge inserts on the main cutting rows which have higher abrasive resistance</li> <li>●Adopting high quality NSK thrust bearing to improve bearing capacity.</li> <li>●Adopting German floating oil seal to prolong sealing time and bearing life.</li> <li>●The A &amp; B cutter types can be used together to achieve full coverage of the bottom hole crushing belt, cutter diameter can be 1.5m, 2m and 3m ect.</li> </ul>	

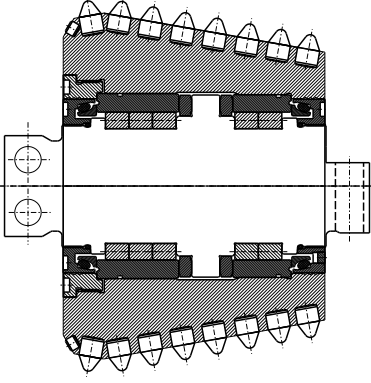
<b>NO</b>	<b>Operation Parameter</b>	<b>SXG310 6A4 V01</b>	<b>SXG310 6B4 V01</b>
<b>1</b>	<b>Suitable hardness of rock</b>	<b>f14~f17</b>	<b>f14~f17</b>
<b>2</b>	<b>Recommend pull-down for single cutter</b>	<b>100KN~180KN</b>	<b>100KN~180KN</b>
<b>3</b>	<b>Maximum pull-down</b>	<b>200KN</b>	<b>200KN</b>
<b>4</b>	<b>Recommend rotation speed</b>	<b>0~13 RPM</b>	<b>0~13 RPM</b>
<b>5</b>	<b>Maximum line velocity</b>	<b>90m/min</b>	<b>90m/min</b>

# Model of TCI Roller Cutter

12-1/4 series: applicable for medium hard to hard formations.



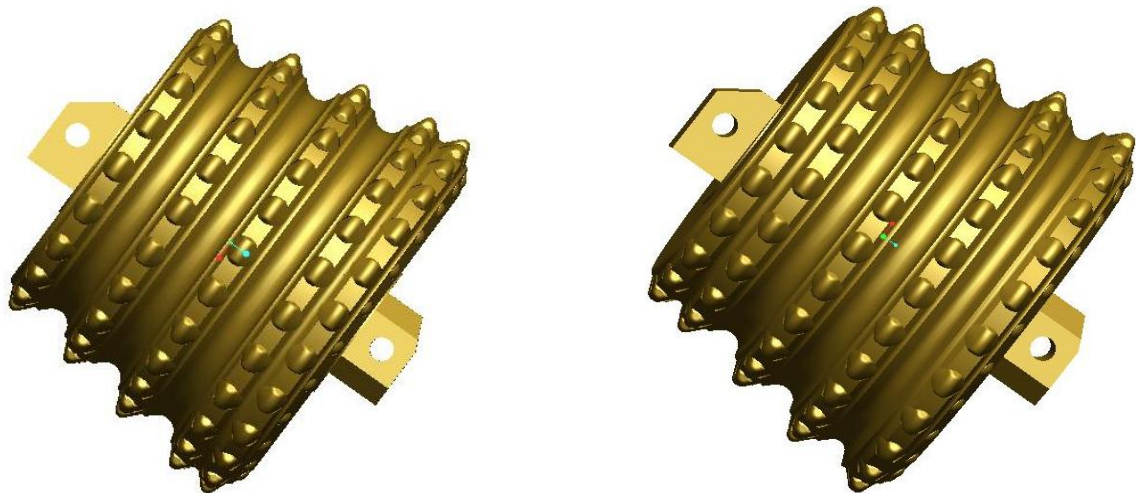
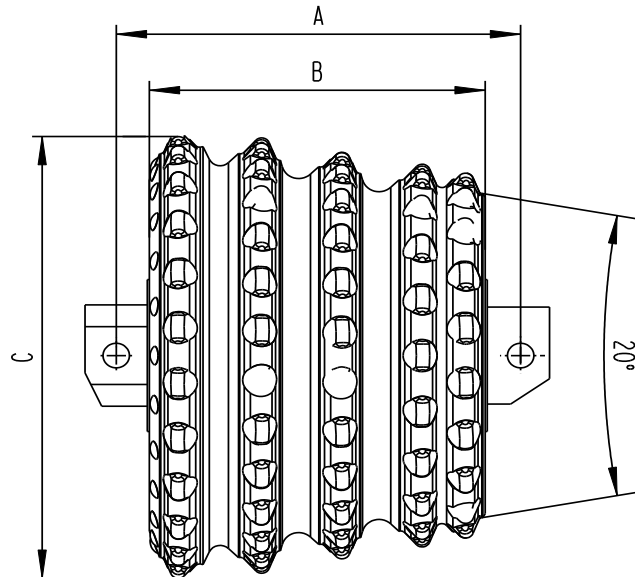
NO	Model	A	B	C	Insert Rows	Cone Angle
1	SXG320 6A4 D01	284	223	320	6	20°
2	SXG320 5B4 D01	284	223	320	5	20°
3	SXG320 8C4 R01	284	223	320	8	20

Model Description	Product Feature	
<p><b><u>SXG 320 6 A 4D01</u></b></p> <ul style="list-style-type: none"> <li>●SXG SHAREATE</li> <li>●320 Max.Diameter</li> <li>●6 Rows of inserts</li> <li>●A Cutter type (A-Double rows inserts on bottom end, B- Single row inserts on top end.</li> <li>●4 Hardness class of rock formation</li> <li>●D01 Connection type ( double holes)</li> </ul>	<ul style="list-style-type: none"> <li>●Adopting the bigger diameter wedge inserts on the main cutting rows which have higher abrasive resistance</li> <li>●Adopting high quality NSK thrust bearing to improve bearing capacity.</li> <li>●Adopting German floating oil seal to prolong sealing time and bearing life.</li> <li>●The A &amp; B cutter types can be used together to achieve full coverage of the bottom hole crushing belt, cutter diameter can be 1.5m, 2m and 3m ect.</li> </ul>	

NO	Operation Parameter	SXG320 6A4 D01	SXG320 5B4 D01	SXG310 8C4 R01
1	Suitable hardness of rock	f14~f17	f14~f17	f14~f17
2	Recommend pull-down for single cutter	100KN~180KN	100KN~180KN	100KN~180KN
3	Maximum pull-down	200KN	200KN	200KN
4	Recommend rotation speed	0~13 RPM	0~13 RPM	0~13 RPM
5	Maximum line velocity	90m/min	90m/min	90m/min

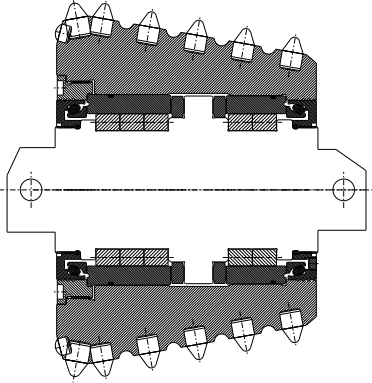
## Model of TCI Roller Cutter

12-1/4 series: applicable for hardness from f14 to f17



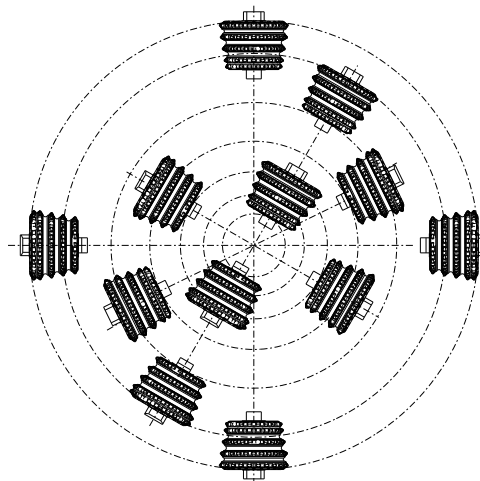
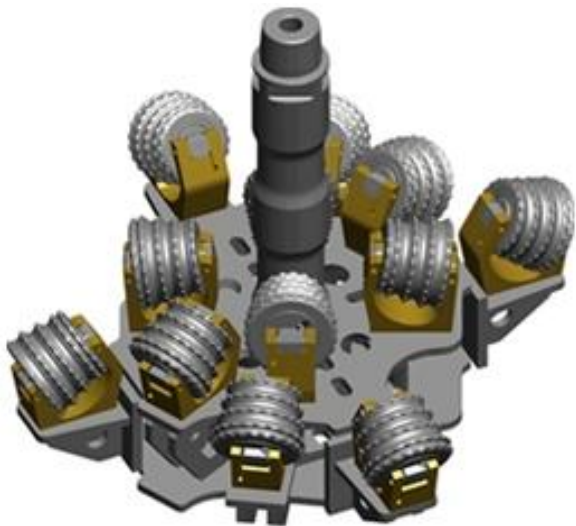


NO	Model	A	B	C	Insert Rows	Cone Angle
1	SXG310 6A4 S01	260	216	310	5	20°
2	SXG310 6B4 S01	260	216	310	5	20°

Model Description	Product Feature	
<p><b><u>SXG 310 5 A 4S01</u></b></p> <ul style="list-style-type: none"> <li>●SXG SHAREATE</li> <li>●310 Max Diameter</li> <li>●6 Rows of inserts</li> <li>●A Cutter type</li> <li>●4 Hardness class of rock formation</li> <li>●S01 Connection type ( Single hole)</li> </ul>	<ul style="list-style-type: none"> <li>●Adopting the bigger diameter spherical inserts to strengthen the gage row.</li> <li>●Adopting the bigger diameter wedge inserts on the main cutting rows which have higher abrasive resistance</li> <li>●Adopting high quality NSK thrust bearing to improve bearing capacity.</li> <li>●Adopting German floating oil seal to prolong sealing time and bearing life.</li> <li>●The A &amp; B cutter types can be used together to achieve full coverage of the bottom hole crushing belt, cutter diameter can be 1.5m, 2m and 3m ect.</li> </ul>	 <p>The image is a technical cross-sectional drawing of a cutterhead. It shows a central shaft with a series of inserts mounted on it. The top row of inserts is spherical, while the main cutting rows consist of wedge-shaped inserts. The drawing includes a horizontal centerline and dimension lines indicating the diameter of the shaft and the positions of the inserts.</p>



NO	Operation Parameter	SXG310 5A4 S01	SXG310 5B4 S01
1	Recommend pull-down for single cutter	100KN~180KN	100KN~180KN
2	Maximum pull-down	200KN	200KN
3	Recommend rotation speed	0~13 RPM	0~13 RPM
4	Maximum line velocity	90m/min	90m/min





**SHAREATE**  
**SHAREATE TOOLS LTD.**

Add: No.6 Weixi Road, Industrial Park,Suzhou,Jiangsu. 215121,China.

\* The contents of this brochure may not be reproduced or reproduced without permission.

